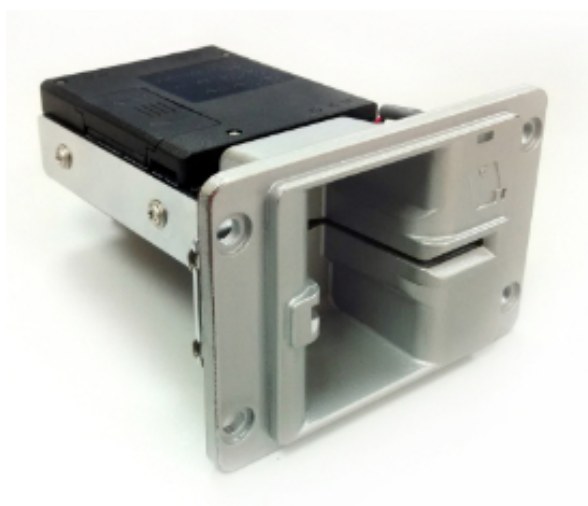


MT188 V1.0

Manual insertion Magnetic card reader



Shenzhen Mingte tech Co., Ltd

Add: 4/F, Aerospace Micro motor Building, High-tech Park, Nanshan District, Shenzhen

电话: 86-755-86030926


传真: 86-755-86030955

Http: //www.mingtetech.com

	Product specification	Date	2014.07
		Ver.	V1.0
		Page	2/10

content

1. Product overview	3
2. The model and identification	3
3. Technical performance	4
4. Interface specification.....	5
a) Data interface	5
b) Power supply interface definition.....	6
c) USB interface definition.....	6
5. Operating maintenance	6
6. Structure size installation diagram.....	7

	Product specification	Date	2014.07
		Ver.	V1.0
		Page	3/10

1. 1. Product overview

This product is an integrated circuit card reading equipment, manual insert、 eject card, can operate RF cards、 IC cards、 Magnetic cards, support PSAM cards, Safe and reliable. It is widely used in telecom、 commercial、 hotel terminal peripherals.

The main features of the product:

2. Read and write of IC cards、 RF cards、 magnetic cards (Read while magnetic cards in or out can be customized);
3. The product has strong anti destructive、 excellent insulation (main material PC+15%G) ;
4. Magnetic head selection flexible, can be customized as one or two magnetic heads;
5. Modularization designed, safe and reliable.

2. The model and identification

2.1 There are product identification label on the card reader, include the type and configuration of products, etc.

For example:



Product name: card reader

Product model: MT188

Product ID: BZ188V100JNCT5

Encoding principle of product ID is xx (ALTEK) xxx (product serial number) Vxxx (hardware version) + Jxxxx (structure configuration: former XX represents bracket, the after XX represents card slot, NC means no bracket or card slot))。

Product serial number: product model +functional category +year +month +serial number



Product specification

Date 2014.07

Ver. V1.0


Page 4/10

2.2 Configure card slot type as follows:

diagram		
type	TY-5	TY-6
material	PC+ABS	PC+ABS
color	black	black

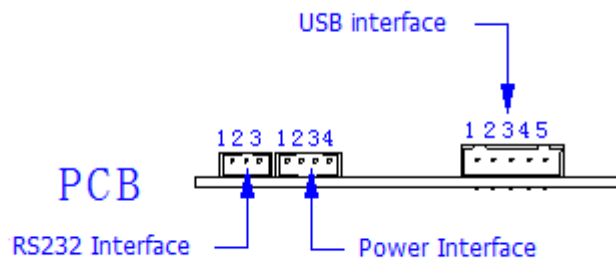
3. Technical performance

A: mechanical properties		A:testing standard
Card insert/eject force	<10N	
Working life	>5X10 ⁵	Working life comply with IEC512-5 standards
Number of contacts	8	
Contact position	ISO7816-2	Contact points position comply with GB/T16649.1/GB/T16649.2 standards
Contact force	0.2-0.6N/point	
Card contact points :	keep contactless	
B: electrical properties		B: testing standard
Working voltage	5V±5%	
Communication mode	RS232 or USB	
Quiescent current	≤50mA	
Maximum current	≤60mA	
Switch resistance	≤150mΩ	Insulation resistance comply with GB/T15279 5.19 standards
Insulation resistance	≥150MΩ	Impulse voltage comply with GB/T15279 5.18 standards

	Product specification	Date	2014.07
		Ver.	V1.0
		Page	5/10

C: environment condition		C: environmental requirement
Working temperature	-20~+65℃	Vibratory stress comply with GB/T15279 5.20.5 standards
Acid environment	PH5~7	Pounds circumstance comply with GB/T15279 5.20.4 standards
D: supported card types		D: standard
IC cards	CPU T=0/T=1	ISO7816 EMV200 Level 1 PBOC3.0
Magnetic cards	2 tracks(1/2 or 2/3)	ISO7810 ISO7811
PSAM cards		
E: physical properties		E: standard
outline dimension	mm	Refer to the following figure
Weight	g	About 200g (without card slot、packaging and accessories)
Dust-proof and water-proof		IP34
Shock resistance		IK10


4. Interface specification



a) Data interface

Data interface use three wire serial interface(RS232) communication mode, defined as follows:

RS232 data interface		
number	define	illustrate
1	GND	grand
2	RXD	Data reception
3	TXD	Data sending

	Product specification	Date	2014.07
		Ver.	V1.0
		Page	6/10

b) Power supply interface definition

Power interface		
number	define	illustrate
1	GND	Power ground
2	GND	Power ground
3	POW	power (+5V)
4	POW	power (+5V)

c) USB interface definition

USB interface		
number	define	illustrate
1	VCC	USB (+5V)
2	DM	USB(D-)
3	DP	USB(D+)
4	GND	USB(GND)
5	CHGND	ground

5. Operating maintenance

After use a amount of time, the surface of magnetic head、 IC touch spot will be covered with some dirt, which effect card reading, so it is necessary for a periodic maintenance.

6. When working 20,000 times, or after 6 months, cleaning maintenance is needed.
7. Use a clean card dipped with alcohol, insert/eject card to clean magnetic head.
8. Use a clean card dipped with alcohol, insert the card reader, stretch several times back to clean IC contact pins.



Product specification

Date 2014.07

Ver. V1.0

Page 7/10

6. Structure size installation diagram

更改说明		
版本		
V4.0	新版发行	

 深圳市铭特科技有限公司 SHENZHEN MINGTE TECH CO., LTD.		设计	材质	mm	1:1
零件名称	读卡器	审核	单位	视角	比例
型号	MT188	批准	日期	2014.07.01	1:1
货品编码	A-188BZ-100-JNCT5				
版本	V1.0				

未标注公差尺寸 以此规格为准	
尺寸	公差
0.00 - 25.00	±0.10
25.01 - 50.00	±0.15
50.01 - 100.00	±0.20
100.00 >	±1.00*



Product specification

Date 2014.07

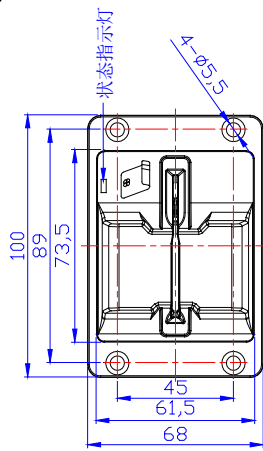
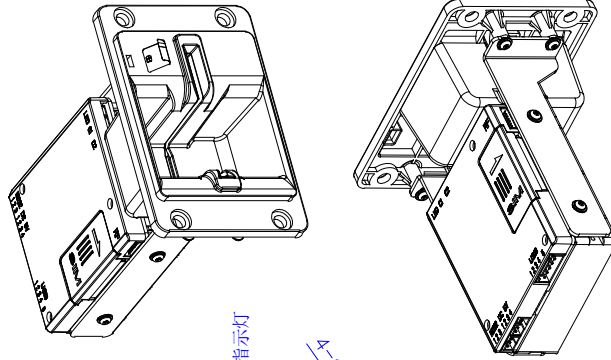
Ver. V1.0

Page 8/10

更改说明

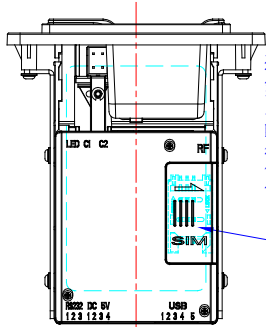
版本

V4.0 新版发行



状态指示灯

4-Ø5.5



—SIM卡座位置(可选项)

114,5

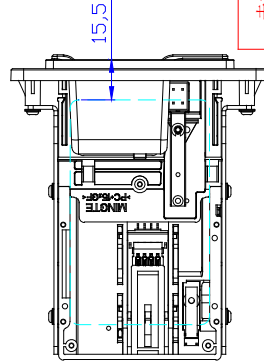
1,8

3,5

8

4,5

28,0

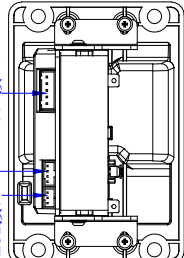


15,5

电源接口

USB接口

R232接口



深圳市铭特科技有限公司
SHENZHEN MINGTE TECH CO., LTD.

未标注公差尺寸
以此规格为准

尺寸	公差	零件名称	读卡器	设计	材质
0.00 - 25.00	±0.10	型号	MT188	审核	单位
25.01 - 50.00	±0.15	货品编码	A-188BZ-100-JHT16	批准	视角
50.01 - 100.00	±0.20	版本	V1.0	日期	比例
100.00 >	±0.30			2014.07.01	1:1
	±1.00*				